



Arc4 ASD Tug "Nordic"

ILS Knight Design Series ice class escort tug suitable for harbor area icebreaking and ice management operations as well as towing for round-the-year operation. Unrestricted navigation (A1+A2+A3).

Class Notation, example

RMRS KM★ Arc 4 AUT 1 FF 3 WS Winterization (-30°) Escort tug



**Main characteristics**

Loa	30.0 m
Lwl	29.5 m
Bm	11.75 m
Dm	5.3 m
Tm	4.1 m (max to the bottom of keel 4.6 m)
Propulsion	Diesel-mechanic
Main engines	2 x 2000 kW
Trial Speed	13 kn
Bollard pull	60 t
Icebreaking capability	Limit thickness 70 cm

**Azimuth thrusters**

Manufacturer	Kongsberg
Thruster type	US -series 255 (CPP) or similar
Weight	27-28 t
Bollard pull two units	60 t
Prop. diameter	2400 mm

**Bow thruster**

Propeller	CPP
Power	200 kW (continuous)
Controls	from bridge and with joystick from bridge wings

**Propulsion engine**

Manufacturer	Cummins (or MAN, Caterpillar)
Box cooler	Blockland or similar
Propulsion engine	QSK60
Power	1900 bkW
Speed	1800 rpm
Configuration	Vee 12, 4-Stroke-Cycle Diesel

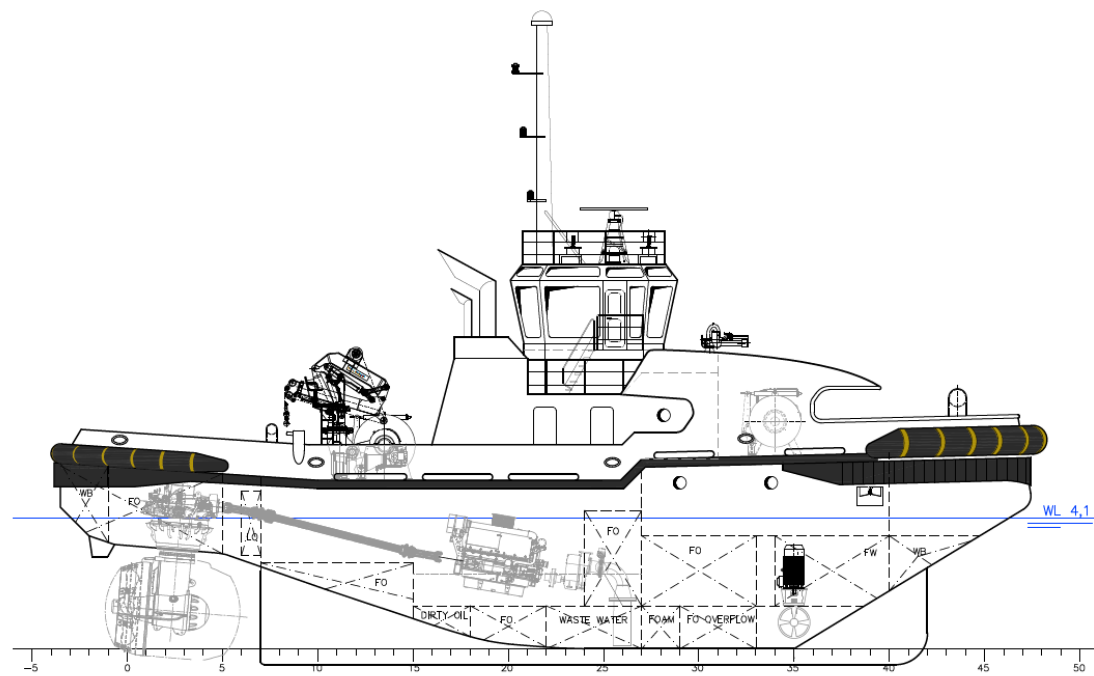
**Auxiliary diesel generators**

Manufacturer	Cummins (or MAN, Caterpillar)
Power	120 kW each
Box coolers	Blockland or similar
Speed	1500 rpm

**Arc4 ASD Tug "Nordic"**

Ice infested harbor/terminal basic robust workhorse concept representing traditional ILS design philosophies.

Design easily customized to fulfill case by case requirements.

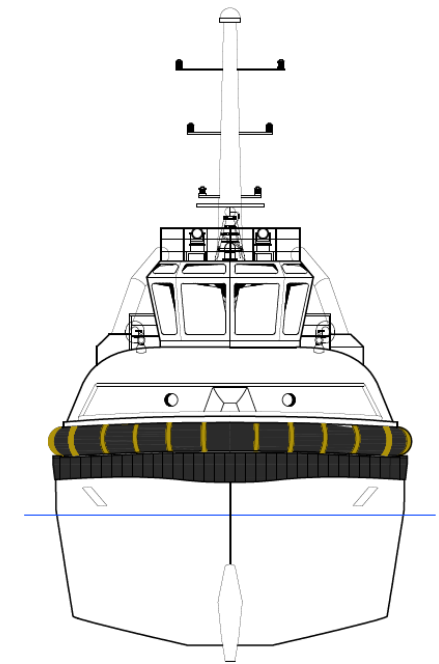


WHEEL HOUSE 9400

MAIN DECK 5300

CABIN DECK 3550

TANK TOP 1350



**FiFi pumps**

Capacity 2 x 1200 m<sup>3</sup>/h

**Towing winch**

Manufacturer DMT or Kongsberg  
Pull 60 t  
Wire speed 12 m/min, first layer  
Brake holding force 150 t  
Drum One

**Deck crane**

Manufacturer HTM Haitai Marine  
Model HDCM1009  
SWL 1.5 t / 6 m  
Working radius 1.6-10 m

**Anchor and Towing winch with escort rendering function**

Manufacturer DMT or Kongsberg  
Pull 90 t  
Haul in speed adjustable 9.2 t / 68 (m/min) high speed  
Brake holding force 150 t  
Drum Split

**Tugger and rope handling winch**

Manufacturer DMT or Kongsberg  
Pull 5 t/20 m/min  
Drum Split

**Boiler**

Hot water boiler for acc abt 150 kW / 4 bar

**Tank Capacities**

Fuel oil	90 m <sup>3</sup>
Ballast	65 m <sup>3</sup>
Fresh water	17 m <sup>3</sup>
Lub oil	2 m <sup>3</sup>
Waste water	12 m <sup>3</sup>
Bilge water	2.5 m <sup>3</sup>